



# 10<sup>th</sup> European Individual Women's Chess Champ

Bulletin №3

11.03.2009

*General Sponsor:*



**БИА** БАЛТИЙСКОЕ  
ИНФОРМАЦИОННОЕ АГЕНТСТВО

НЕВСКОЕ ВРЕМЯ  
**часник**

РАДИО  
БАЛТИКА  
104.8

ДЕСЯТКА

After the 3rd round of European Individual Women's chess championship there are only 6 players leading with 100% result. Easily won their games Cristina-Adela Foisor (Romania) and Hoang Thanh Trang (Hungary). Spectacular fights were successful for Monika Socko of Poland and Eugenia Ovod of Russia against Julia Demina (Russia) and Deimante Daulyte (Lithuania) respectively – both games can be found in our review.

Tragic oversight decided the game Inna Gaponenko – Oksana Gritsayeva (both from Ukraine). During all the game Inna had winning chances, but made a crucial mistake calculating the arising pawn endgame. Top-board encounter between Nana Dzagnidze (Georgia) and Jolanta Zawadzka (Poland) was full of tension – both black and white missed a lot of favorable possibilities, but it was the Polish player who made the last mistake.

Some of runner-ups also played nervously. Anna Muzychuk of Slovenia played out an unsuccessful opening against Tatiana Malgina from Russia and lost a pawn. However, the top-seed of the tournament showed her high endgames skills, and bewildered Tatiana missed even the draw. This endgame is also analyzed below.

Ketevan Arahamia-Grant (Scotland) reached an advantage quickly in her game with Tatiana Molchanova (Russia), but Tatiana inventively sacrificed the Queen for the couple of Bishops trying to build a fortress. Finally, Ketevan managed to find zugzwang destructive for white. On the contrary, disappointing blunder was made by Natalia Pogonina, while she was actualizing her advantage against Daria Charochkina (both players represent Russia). European Champion 2000 Natalia Zhukova from Ukraine is still searching for a chance to win a game – she has drawn all 3 games.

### **Salome Melia (Georgia):**

Today I made a draw, and won two other games. Of course, it's too early to estimate my own level of play in this tournament, as well as that of other participants, the Championship has just begun. It can only be judged after all 11 games are played. Though, the event is held every year and mostly the same players are taking part.

#### **Certainly you've been in Russia before?**

I've visited Russia many times, but St. Petersburg – never. Before the start of the European Championship I played a tournament in Moscow, for this reason I came to St. Petersburg a few days earlier, and had some time to see the city. Surely it was not enough and I'm going to continue sight-seeing on the rest day.

#### **Could you compare St.Petersburg and Moscow?**

If there can be any comparison, it's clearly not in favour of the capital. I'd heard so many nice things about St. Petersburg, and when I came here it justified my expectations. The matter is not the city itself, its museums, views and so on, but the people. The difference in citizens' relations with one another is very noticeable, not to mention the attitude towards visitants.

#### **Do you have passions for anything besides chess?**

In general, I'm occupied with many things in life. I've graduated from musical school, the faculty of law. Once I was a prize-winner in 1000-meters race. I play volleyball and tennis. It's not interesting to watch only, I prefer to take active part in everything!

#### **Were there any difficulties to come to Russia?**

Fortunately, no. One of our players had a problem getting her visa, but it was caused by a coincidence, not a political reason.

J. Demina – M. Socko, Nimzo-Indian A17,  
round 3

1.  $\text{d}3$   $\text{d}f6$  2.  $\text{c}4$   $\text{e}6$  3.  $\text{c}3$   $\text{b}4$  4.  $\text{c}2$   $\text{O-O}$  5.  $\text{a}3$   $\text{xc}3$  6.  $\text{xc}3$   $\text{d}6$  7.  $\text{b}4$   $\text{b}6$  8.  $\text{b}2$   $\text{bd}7$  9.  $\text{e}3$   $\text{b}7$  10.  $\text{e}2$   $\text{c}5$  The main Anti-Nimzo position, it was very popular in the 90ties. Despaired of searching for advantage in Nimzo, Catalan and Queen's Indian closed-openings experts interpreted the opening this way. With Bishops couple, white hopes for a deep endgame. Black is placing his pawns to dark square planning to prove his Knight is more worthy than white Bishop in stormy middlegame.

11.  $\text{O-O}$   $\text{c}8$  12.  $\text{ac}1$  A pattern move. At least, it doesn't fit in Julia's plan. It's not possible to go without advancing a and b pawns – so a1 is a place for the Rook.

12...  $\text{c}7$  13.  $\text{fd}1$   $\text{e}7$  14.  $\text{d}4$   $\text{e}4$  15.  $\text{b}3$   $\text{f}5$  Relying on the e4 outpost, Monika starts actions on the k-side.

16.  $\text{dxc}5$   $\text{bxc}5$  17.  $\text{b}5?!$  Serenity. White should have kept the tension in the center – but was needed to start the fight against the e4 Knight 17.  $\text{d}2$   $\text{h}4$  18.  $\text{g}3$   $\text{h}3$  19.  $\text{f}1$ .

17...  $\text{df}6$  18.  $\text{h}3$   $\text{g}4!$  Pouncing upon the f2. The sacrifice can't be accepted, if the f file opens up, the King can't survive long.

19.  $\text{f}1$   $\text{h}6$

In "early A. Morozevich's" style, but in his games the Kingt usually went  $\text{Kf}3$ - $\text{g}5$ - $\text{h}3$ .

20.  $\text{a}1?!$

Unsuccessful preventive measures against g-pawn advance. Unfortunately, white q-side pawns moves too late. 20.  $\text{a}4$  assumes that black would have to pay attention to block the pawn, diverting from her mating plans.

20...  $\text{e}5!$  Of course, there's no sense to simplify the position 20...  $\text{g}5$  21.  $\text{b}2$   $\text{e}5$  22.  $\text{d}2$ .

21.  $\text{fd}1$  Hurrying up to free the f1 for the Bishop. The lines 21.  $\text{b}2$   $\text{g}5$ ;

21.  $\text{c}2$   $\text{g}5$  22.  $\text{d}1$   $\text{f}4$  show how dangerous the attack from the diagonal is.



21...  $\text{g}4!$  Again, it's not possible to take the Knight, and black only has to bring the Queen and Rook to the attack.

22.  $\text{f}1$   $\text{h}5$  23.  $\text{a}4$  Witty play of the Polish didn't let Julia to get rid of the e4 Knight, there's no other way but moving the pawns forward. 23...  $\text{f}6$  24.  $\text{a}5$   $\text{cf}7$  In the best traditions of Geller and Gligorich. All the pieces are concentrated against the opponent's King, and Monika passes to the offensive.

25.  $\text{a}6$   $\text{a}8$  26.  $\text{cd}1$  26.  $\text{b}6$   $\text{axb}6$  27.  $\text{xb}6$   $\text{h}6$  doesn't help.

26...  $\text{h}6$  27.  $\text{b}2$   $\text{gxf}2!$  White is taken by storm.

28.  $\text{xf}2$   $\text{xf}2$  29.  $\text{xf}2$   $\text{e}4$  30.  $\text{e}1$   $\text{f}4$



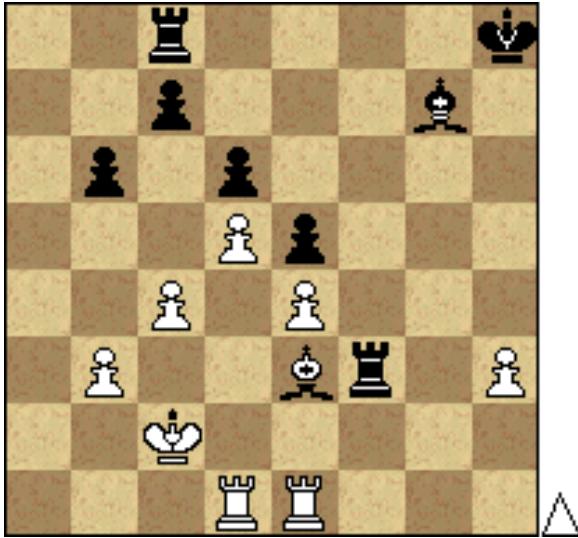
31.  $\text{c}1?$  The decisive mistake. The King should have been evacuated immediately.

31.  $\text{c}2$   $\text{f}3$  32.  $\text{gxf}3$   $\text{exf}3$  33.  $\text{f}1$   $\text{g}5$  34.  $\text{e}1$  with some hope to consolidate.

31...  $\text{f}3$  Now white gets mated.

32. gxf3 exf3 33. ♔d3 ♖g5 34. e4 ♗h4 35. ♕e3 ♗f4 36. ♕f2 ♗h2 37. ♕e3 f2 38. ♘c2 ♖f3 White resigned.

T. Malgina – A. Muzychuk,  
round 3



Tatiana Malgina chose King's Indian with 6.h3 variation (which became popular again recently), then played very consistently and led the game to a technically winning endgame. But it seemed she was substituted at this moment ...

31. ♖a1? It reminds me a quotation from Ukrainian GM Shneider who defeated Garry Kasparov in the middle of 90ties in a team tournament. Happy winner commented his refusal of draw proposal "Kasparov or not, I've got an extra pawn!" 31. h4 keeps material advantage, since after 31... ♗f6 32. ♕d3 it's not possible to capture on h4.

31... ♖xh3 32. ♖a7 ♖f8! A high-level move! After 32... ♗h6 33. ♗xh6 ♖xh6 34. ♕c3 ♖h3 35. ♕b4 ♕g7 36. ♖f1 black King is placed poorly so it must be lost.

33. ♖xc7 ♖ff3 The skill of finding starting an explosive counter-attack after a long passive defense is very valuable, as M. Botvinnik and A. Karpov mentioned. Spellbound Tatiana gives up a piece, hoping for her passed pawns. It's so understandable – for the first time in the game black created a threat, it's difficult to switch to fight for equalization.

34. ♖d7 After 34. ♗c1 ♖f2 35. ♕b1 ♗h6 a draw looks logical.

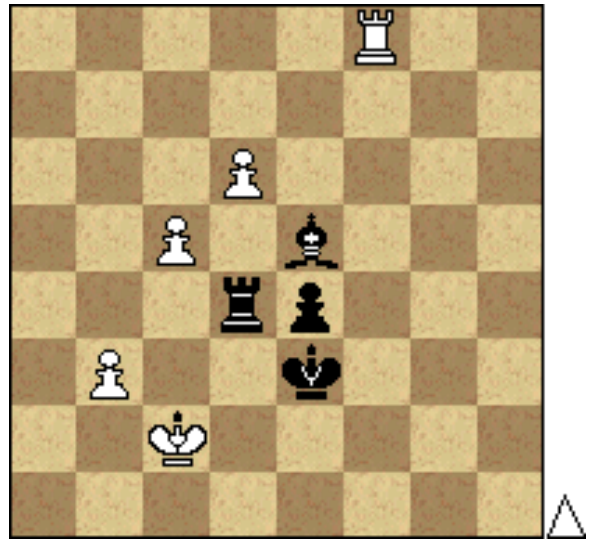
It's dangerous to let the Rs on the second rank

34. ♗d2 ♖f2.

34... ♖xe3 35. ♖xe3 ♖xe3 36. ♖xd6 ♖xe4 37. ♖xb6 ♖d4 38. d6?! The main endgame precept: the King should be active. Necessary was 38. ♕c3 e4 39. ♕b4! It's much easier to advance pawns when all the strengths are in harmony.

38... e4 39. c5 The line 39. ♖b8 ♕h7 40. c5 ♗f6 41. b4 ♕g6 42. ♕b3 ♗e5 shows the main white's problem of this endgame. One black pawn can be promoted earlier than so nicely-looking white chain.

39... ♗e5 40. ♖b8 ♕g7 41. ♖e8 ♕f6 42. ♖f8 ♕e6 43. ♖e8 ♕f5 44. ♖f8 ♕g4 45. ♖e8 ♕f4 46. ♖f8 ♕e3

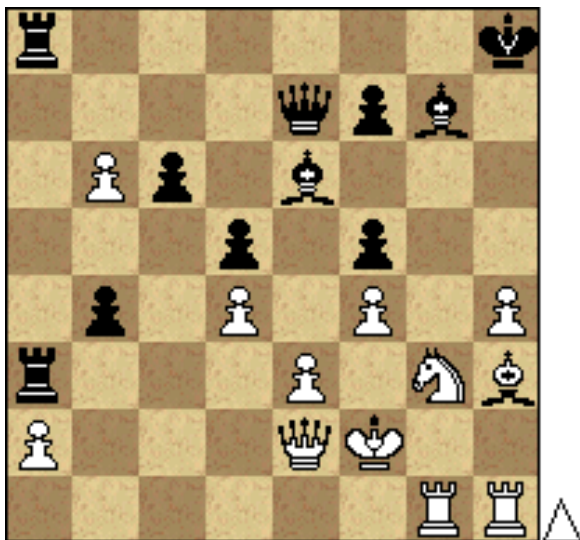


47. ♖e8? Crucial slip. White doesn't care about her King again. The only but sufficient move 47. b4 led to a draw.

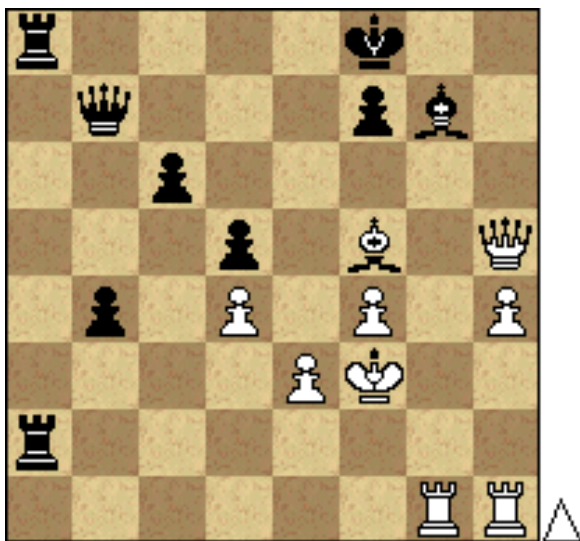
47... ♖d2 48. ♕b1 ♗c3 The pawns are stopped, and the King is cut out.

49. ♖g8 ♗b4 50. ♖g5 ♕f4 51. ♖h5 e3 White resigned.

E. Ovod – D. Daulyte,  
round 3



The position is very sharp. Black seems to be better, threatening seriously on the a2 and e3. "a" file. Eugenia Ovod is not scared of ghosts and conducts educational diverting combination. **28.**  $\text{b7!}$   $\text{♙xb7}$  **29.**  $\text{♙h5}$   $\text{♜g8}$  **30.**  $\text{♞xf5}$   $\text{♞xa2}$  **31.**  $\text{♜f3}$   $\text{♞xf5}$  **32.**  $\text{♞xf5}$   $\text{♜f8}$



**33.**  $\text{♞xg7!}$  Chess is a tragedy of a single tempo, black Queens has no time to support the second rank invasion from b5. **33...**  $\text{♜xg7}$  **34.**  $\text{♞g1}$   $\text{♜f8}$  **35.**  $\text{♙h8}$   $\text{♜e7}$  **36.**  $\text{♙e5}$   $\text{♜f8}$  **37.**  $\text{♙d6}$   $\text{♙e7}$  **38.**  $\text{♙h6}$  Black resigned.

# 10th European Individual Women's Chess Champ.

Round: 3

Table White Fed Score Black Fed Score Result

1	2	GM	Dzagnidze, Nana	GEO	2	29	WGM	Zawadzka, Jolanta	POL	2	1-0
2	32	IM	Turova, Irina	RUS	2	7	GM	Lahno, Kateryna	UKR	2	1/2
3	8	GM	Hoang Thanh Trang	HUN	2	39	IM	Zimina, Olga	ITA	2	1-0
4	38	IM	Zaiatz, Elena	RUS	2	13	WGM	Romanko, Marina	RUS	2	1/2
5	14	IM	Gaponenko, Inna	UKR	2	45	WFM	Gritsayeva, Oksana	UKR	2	0-1
6	40	WGM	Demina, Julia	RUS	2	15	GM	Socko, Monika	POL	2	0-1
7	16	IM	Kovalevskaya, Ekaterina	RUS	2	47	WGM	Aginian, Nelly	ARM	2	1/2
8	57	WFM	Giryra, Olga	RUS	2	17	IM	Lomineishvili, Maia	GEO	2	1/2
9	18	IM	Ovod, Evgenija	RUS	2	75	WIM	Daulyte, Deimante	LTU	2	1-0
10	79	WIM	Iljushina, Olga	RUS	2	21	IM	Melia, Salome	GEO	2	1/2
11	130	WFM	Brunello, Marina	ITA	2	25	IM	Foisor, Cristina-Adela	ROU	2	0-1
12	44	WFM	Malgina, Tatiana	RUS	1,5	1	IM	Muzychuk, Anna	SLO	1,5	0-1
13	52	WIM	Molchanova, Tatjana	RUS	1,5	3	IM	Arakhamia-Grant, Ketevan	SCO	1,5	0-1
14	4	IM	Ushenina, Anna	UKR	1,5	59	WIM	Berzina, Ilze	LAT	1,5	1-0
15	53	WIM	Charochkina, Daria	RUS	1,5	9	WGM	Pogonina, Natalija	RUS	1,5	1/2
16	62	WIM	Bulmaga, Irina	MDA	1,5	11	IM	Mkrtchian, Lilit	ARM	1,5	0-1
17	12	IM	Paetz, Elisabeth	GER	1,5	63	WFM	Tomilova, Elena	RUS	1,5	1/2
18	54	WIM	Galojan, Lilit	ARM	1,5	19	IM	Muzychuk, Mariya	UKR	1,5	1/2
19	22	IM	Khurtsidze, Nino	GEO	1,5	61	WIM	Chasovnikova, Eugenia	RUS	1,5	1-0
20	70	WIM	Komiagina, Maria	RUS	1,5	23	IM	Khukhashvili, Sopiko	GEO	1,5	0-1
21	24	WGM	Shadrina, Tatiana	RUS	1,5	73	WFM	Paikidze, Nazi	GEO	1,5	1-0
22	66	WGM	Kadziolka, Beata	POL	1,5	27	IM	Rajlich, Iweta	POL	1,5	1/2
23	28	WGM	Kovanova, Baira	RUS	1,5	78	WIM	Cherenkova, Kristina	RUS	1,5	1-0
24	30	WFM	Bodnaruk, Anastasia	RUS	1,5	82	WGM	Makropoulou, Marina	GRE	1,5	1-0
25	34	IM	Gvetadze, Sopio	GEO	1,5	158		Martynova, Anastasia	RUS	1,5	1-0
26	81	WIM	Popova, Natalija	BLR	1,5	37	WGM	Cherednichenko, Svetlana	UKR	1,5	0-1
27	74	WFM	Fominykh, Maria	RUS	1,5	43	WIM	Majdan, Joanna	POL	1,5	1/2
28	6	WGM	Zhukova, Natalia	UKR	1	126	WFM	Kushka, Alena	RUS	1,5	1/2
29	91	WIM	Dolgova, Olga	RUS	1	5	IM	Kosintseva, Tatiana	RUS	1	0-1
30	93	IM	Kostiukova, Liubov	UKR	1	10	GM	Peng, Zhaoqin	NED	1	1-0
31	20	IM	Matveeva, Svetlana	RUS	1	92	WGM	Huda, Maryana	UKR	1	1-0
32	26	IM	Peptan, Corina-Isabela	ROU	1	95	WIM	Tsatsalashvili, Ketii	GEO	1	1/2
33	98	WGM	Eidelson, Rakhil	BLR	1	33	WGM	Stepovaia, Tatiana	RUS	1	0-1
34	100		Lelekova, Olga	RUS	1	35	WGM	Stojanovic, Andjelija	SRB	1	1/2
35	36	WGM	Calzetta, Monica	ESP	1	97	WIM	Umudova, Nargiz	AZE	1	1/2
36	102	WFM	Bogumil, Tatiana	RUS	1	41	WGM	Motoc, Alina	ROU	1	0-1
37	42	IM	Dworakowska, Joanna	POL	1	101	WIM	Danelia, Mariam	GEO	1	1-0
38	46	IM	Vasilevich, Irina	RUS	1	105	WIM	Limontaite, Simona	LTU	1	1/2
39	48	WGM	Grabuzova, Tatiana	RUS	1	106	WIM	Makka, Ioulia	GRE	1	1-0
40	109	WFM	Butuc, Maria	RUS	1	49	WFM	Severiukhina, Zoja	RUS	1	0-1
41	50	WGM	Shumiakina, Tatiana	RUS	1	107	WIM	Papadopoulou, Vera	GRE	1	1-0
42	113	WFM	Avdeenko, Tatiana	RUS	1	51	WIM	Solovjova, Valentina	RUS	1	0-1
43	115		Lupik, Marina	RUS	1	55	WGM	Kochetkova, Julia	RUS	1	0-1
44	56	WIM	Paulet, Iozefina	ROU	1	108	WFM	Korchagina, Viktoria	RUS	1	1-0
45	58	WGM	Nebolsina, Vera	RUS	1	116	WFM	Cherednichenko, Elena	UKR	1	1-0
46	60	WIM	Kharashuta, Ekaterina	RUS	1	118	WFM	Zakharova, Alexandra	RUS	1	1-0
47	64	WGM	Manakova, Maria	SRB	1	119	WIM	Cedikova, Katerina	CZE	1	0-1
48	121	WFM	Rozhko, Mariya	RUS	1	65		Savina, Anastasia	RUS	1	0-1

**10th European Individual Women's Chess Champ.****Round: 3**

Table White			Fed Score Black			Fed Score Result		
-------------	--	--	-----------------	--	--	------------------	--	--

49	123		Kuzevanova, Evgenia	RUS	1	67	WGM	Zakurdjaeva, Irina	RUS	1	1/2
50	68	WIM	Dolzhikova, Kateryna	UKR	1	120	WFM	Ni, Viktorija	LAT	1	1-0
51	125		Minina, Veronika	RUS	1	69	WGM	Botsari, Anna-Maria	GRE	1	1/2
52	133	WFM	Sorokina, Anastasia	RUS	1	71	WIM	Guramishvili, Sopiko	GEO	1	0-1
53	72	WGM	Stjazhkina, Olga	RUS	1	122		Jinova, Lucie	CZE	1	1/2
54	76	WFM	Lomako, Anna	RUS	1	124	WFM	Yakovich, Yuliya	RUS	1	0-1
55	137		Abdulla, Khayala	AZE	1	77	WGM	Borisova, Elizaveta	RUS	1,5	1-0
56	155		Lezhepekova, Veronika	RUS	1	80	WGM	Kursova, Maria	RUS	1	1-0
57	85	WIM	Tarasova, Viktoriya	RUS	1	144		Balaian, Alina	RUS	1	0-1
58	157		Petrukhina, Irina	RUS	1	86	WIM	Fakhiridou, Ekaterini	GRE	1	0-1
59	89	WFM	Arabidze, Meri	GEO	1	152		Azimova, Karina	RUS	1	1-0
60	83	WIM	Andriasian, Siranush	ARM	0,5	117	WFM	Miednikova, Swietlana	RUS	0,5	1-0
61	143		Alekseeva, Alena	RUS	0,5	84	WIM	Akatova, Ekaterina	RUS	0,5	0-1
62	87	WGM	Wagener, Anna	LUX	0,5	136	WFM	Gorbatenko, Kateryna	UKR	0,5	1/2
63	131		Zykova, Antonina	RUS	0,5	88	WIM	Kirillova, Varvara	RUS	0,5	0-1
64	94	WGM	Shaidullina, Sandugach	RUS	0,5	159	WFM	Della-Rossa, Anastasia	RUS	0,5	1-0
65	147		Zizlova, Sofia	RUS	0,5	99	WIM	Ivakhinova, Inna	RUS	0,5	0-1
66	149		Grigoryeva, Olga A.	RUS	0,5	110		Hairapetian, Anna	ARM	0,5	0-1
67	111	WFM	Mammadova, Gulnar	AZE	0,5	142		Nikanova, Ekaterina	BLR	0,5	1/2
68	151		Ziazulkina, Nastassia	BLR	0,5	112	WFM	Zainullina, Nataliya	RUS	0,5	1/2
69	160	WCM	Kiseleva, Arina	RUS	0,5	114		Kazimova, Narmin	AZE	0,5	0-1
70	161		Khokhlova, Ekaterina	RUS	0,5	31	IM	Sedina, Elena	ITA	0	1/2
71	145	WFM	Abuladze, Lana	RUS	0	90	WGM	Mamedjarova, Turkan	AZE	0	0-1
72	96	WIM	Ambartsumova, Karina	RUS	0	146	WFM	Bakalarz, Grazyna	LUX	0	1-0
73	148		Goryachkina, Aleksandra	RUS	0	103		Bezgodova, Svetlana	RUS	0	0-1
74	104	WGM	Kouvatsou, Maria	GRE	0	150		Kluchik, Julia	RUS	0	1-0
75	127		Rjanova, Valery	RUS	0	154	WFM	Styazhkina, Anna	RUS	0	0-1
76	153		De Seroux, Camille	SUI	0	128		Makka, Evanthia	GRE	0	0-1
77	129	WFM	Baciu, Diana	MDA	0	156		Efremova, Daria	RUS	0	1-0
78	163		Ovod, Irina	RUS	0	132	WFM	Bezgodova, Maria	RUS	0	0-1
79	164		Chetina, Elizaveta	RUS	0	134	WFM	Sokolova, Vera	RUS	0	0-1
80	135	WFM	Samigullina, Diana	RUS	0	162		Tskhadadze, Anna	RUS	0	1-0
81	166		Karasova, Daria	RUS	0	138	WFM	Malinicheva, Lidia	RUS	0	0-1
82	139	WFM	Khropova, Larisa	RUS	0	165		Elizarova, Taisia	RUS	0	1-0
83	168		Toporkova, Sofia	RUS	0	140	WIM	Lomakina, Galja	RUS	0	0-1
84	141		Ikonomopoulou, Maria	GRE	0	167		Kolesnikova, Kristina	RUS	0	0-1

# 10th European Individual Women's Chess Champ.

## Round: 4

Table White Fed Score Black Fed Score Result

1	25	IM	Foisor, Cristina-Adela	ROU	3	2	GM	Dzagnidze, Nana	GEO	3	
2	45	WFM	Gritsayeva, Oksana	UKR	3	8	GM	Hoang Thanh Trang	HUN	3	
3	15	GM	Socko, Monika	POL	3	18	IM	Ovod, Evgenija	RUS	3	
4	1	IM	Muzychuk, Anna	SLO	2,5	24	WGM	Shadrina, Tatiana	RUS	2,5	
5	3	IM	Arakhamia-Grant, Ketevan	SCO	2,5	28	WGM	Kovanova, Baira	RUS	2,5	
6	23	IM	Khukhashvili, Sopiko	GEO	2,5	4	IM	Ushenina, Anna	UKR	2,5	
7	7	GM	Lahno, Kateryna	UKR	2,5	30	WFM	Bodnaruk, Anastasia	RUS	2,5	
8	11	IM	Mkrtchian, Lilit	ARM	2,5	32	IM	Turova, Irina	RUS	2,5	
9	13	WGM	Romanko, Marina	RUS	2,5	34	IM	Gvetadze, Sopio	GEO	2,5	
10	37	WGM	Cherednichenko, Svetlana	UKR	2,5	16	IM	Kovalevskaia, Ekaterina	RUS	2,5	
11	17	IM	Lomineishvili, Maia	GEO	2,5	38	IM	Zaiatz, Elena	RUS	2,5	
12	21	IM	Melia, Salome	GEO	2,5	57	WFM	Giryia, Olga	RUS	2,5	
13	47	WGM	Aginian, Nelly	ARM	2,5	22	IM	Khurtsidze, Nino	GEO	2,5	
14	5	IM	Kosintseva, Tatiana	RUS	2	79	WIM	Iljushina, Olga	RUS	2,5	
15	9	WGM	Pogonina, Natalija	RUS	2	56	WIM	Paulet, Iozefina	ROU	2	
16	65		Savina, Anastasia	RUS	2	12	IM	Paetz, Elisabeth	GER	2	
17	63	WFM	Tomilova, Elena	RUS	2	14	IM	Gaponenko, Inna	UKR	2	
18	19	IM	Muzychuk, Mariya	UKR	2	58	WGM	Nebolsina, Vera	RUS	2	
19	71	WIM	Guramishvili, Sopiko	GEO	2	20	IM	Matveeva, Svetlana	RUS	2	
20	27	IM	Rajlich, Iweta	POL	2	60	WIM	Kharashuta, Ekaterina	RUS	2	
21	29	WGM	Zawadzka, Jolanta	POL	2	66	WGM	Kadziolka, Beata	POL	2	
22	33	WGM	Stepovaia, Tatiana	RUS	2	68	WIM	Dolzhikova, Kateryna	UKR	2	
23	39	IM	Zimina, Olga	ITA	2	74	WFM	Fominykh, Maria	RUS	2	
24	75	WIM	Daulyte, Deimante	LTU	2	40	WGM	Demina, Julia	RUS	2	
25	41	WGM	Motoc, Alina	ROU	2	89	WFM	Arabidze, Meri	GEO	2	
26	86	WIM	Fakhiridou, Ekaterini	GRE	2	42	IM	Dworakowska, Joanna	POL	2	
27	43	WIM	Majdan, Joanna	POL	2	93	IM	Kostiukova, Liubov	UKR	2	
28	119	WIM	Cedikova, Katerina	CZE	2	48	WGM	Grabuzova, Tatiana	RUS	2	
29	49	WFM	Severiukhina, Zoja	RUS	2	130	WFM	Brunello, Marina	ITA	2	
30	124	WFM	Yakovich, Yuliya	RUS	2	50	WGM	Shumiakina, Tatiana	RUS	2	
31	51	WIM	Solovjova, Valentina	RUS	2	137		Abdulla, Khayala	AZE	2	
32	126	WFM	Kushka, Alena	RUS	2	53	WIM	Charochkina, Daria	RUS	2	
33	144		Balaian, Alina	RUS	2	54	WIM	Galojan, Lilit	ARM	2	
34	55	WGM	Kochetkova, Julia	RUS	2	155		Lezhepekova, Veronika	RUS	2	
35	82	WGM	Makropoulou, Marina	GRE	1,5	6	WGM	Zhukova, Natalia	UKR	1,5	
36	84	WIM	Akatova, Ekaterina	RUS	1,5	26	IM	Peptan, Corina-Isabela	ROU	1,5	
37	35	WGM	Stojanovic, Andjelija	SRB	1,5	81	WIM	Popova, Natalija	BLR	1,5	
38	88	WIM	Kirillova, Varvara	RUS	1,5	36	WGM	Calzetta, Monica	ESP	1,5	
39	95	WIM	Tsatsalashvili, Ketii	GEO	1,5	44	WFM	Malgina, Tatiana	RUS	1,5	
40	97	WIM	Umudova, Nargiz	AZE	1,5	46	IM	Vasilevich, Irina	RUS	1,5	
41	99	WIM	Ivakhinova, Inna	RUS	1,5	52	WIM	Molchanova, Tatjana	RUS	1,5	
42	59	WIM	Berzina, Ilze	LAT	1,5	83	WIM	Andriasian, Siranush	ARM	1,5	
43	61	WIM	Chasovnikova, Eugenia	RUS	1,5	94	WGM	Shaidullina, Sandugach	RUS	1,5	
44	105	WIM	Limontaite, Simona	LTU	1,5	62	WIM	Bulmaga, Irina	MDA	1,5	
45	67	WGM	Zakurdjaeva, Irina	RUS	1,5	100		Lelekova, Olga	RUS	1,5	
46	69	WGM	Botsari, Anna-Maria	GRE	1,5	110		Hairapetian, Anna	ARM	1,5	
47	122		Jinova, Lucie	CZE	1,5	70	WIM	Komiagina, Maria	RUS	1,5	
48	114		Kazimova, Narmin	AZE	1,5	72	WGM	Stjzhkina, Olga	RUS	1,5	

**10th European Individual Women's Chess Champ.****Round: 4**

<b>Table White</b>		<b>Fed</b>	<b>Score</b>	<b>Black</b>		<b>Fed</b>	<b>Score</b>	<b>Result</b>
--------------------	--	------------	--------------	--------------	--	------------	--------------	---------------

49	73	WFM	Paikidze, Nazi	GEO	1,5	123		Kuzevanova, Evgenia	RUS	1,5	
50	77	WGM	Borisova, Elizaveta	RUS	1,5	125		Minina, Veronika	RUS	1,5	
51	78	WIM	Cherenkova, Kristina	RUS	1,5	158		Martynova, Anastasia	RUS	1,5	
52	10	GM	Peng, Zhaoqin	NED	1	115		Lupik, Marina	RUS	1	
53	116	WFM	Cherednichenko, Elena	UKR	1	64	WGM	Manakova, Maria	SRB	1	
54	118	WFM	Zakharova, Alexandra	RUS	1	76	WFM	Lomako, Anna	RUS	1	
55	80	WGM	Kursova, Maria	RUS	1	120	WFM	Ni, Viktorija	LAT	1	
56	128		Makka, Evanthia	GRE	1	85	WIM	Tarasova, Viktoriya	RUS	1	
57	132	WFM	Bezgodova, Maria	RUS	1	87	WGM	Wagener, Anna	LUX	1	
58	90	WGM	Mamedjarova, Turkan	AZE	1	121	WFM	Rozhko, Mariya	RUS	1	
59	134	WFM	Sokolova, Vera	RUS	1	91	WIM	Dolgova, Olga	RUS	1	
60	92	WGM	Huda, Maryana	UKR	1	129	WFM	Baciu, Diana	MDA	1	
61	136	WFM	Gorbatenko, Kateryna	UKR	1	96	WIM	Ambartsumova, Karina	RUS	1	
62	138	WFM	Malinicheva, Lidia	RUS	1	98	WGM	Eidelson, Rakhil	BLR	1	
63	101	WIM	Danelia, Mariam	GEO	1	133	WFM	Sorokina, Anastasia	RUS	1	
64	140	WIM	Lomakina, Galja	RUS	1	102	WFM	Bogumil, Tatiana	RUS	1	
65	103		Bezgodova, Svetlana	RUS	1	135	WFM	Samigullina, Diana	RUS	1	
66	142		Nikanova, Ekaterina	BLR	1	104	WGM	Kouvatsou, Maria	GRE	1	
67	106	WIM	Makka, Ioulia	GRE	1	139	WFM	Khropova, Larisa	RUS	1	
68	107	WIM	Papadopoulou, Vera	GRE	1	151		Ziaziulkina, Nastassia	BLR	1	
69	108	WFM	Korchagina, Viktoria	RUS	1	157		Petrukhina, Irina	RUS	1	
70	152		Azimova, Karina	RUS	1	109	WFM	Butuc, Maria	RUS	1	
71	154	WFM	Styazhkina, Anna	RUS	1	111	WFM	Mammadova, Gulnar	AZE	1	
72	112	WFM	Zainullina, Nataliya	RUS	1	161		Khokhlova, Ekaterina	RUS	1	
73	167		Kolesnikova, Kristina	RUS	1	113	WFM	Avdeenko, Tatiana	RUS	1	
74	31	IM	Sedina, Elena	ITA	0,5	147		Zizlova, Sofia	RUS	0,5	
75	117	WFM	Miednikova, Swietlana	RUS	0,5	149		Grigoryeva, Olga A.	RUS	0,5	
76	159	WFM	Della-Rossa, Anastasia	RUS	0,5	131		Zykova, Antonina	RUS	0,5	
77	160	WCM	Kiseleva, Arina	RUS	0,5	143		Alekseeva, Alena	RUS	0,5	
78	156		Efremova, Daria	RUS	0	127		Rjanova, Valery	RUS	0	
79	162		Tskhadadze, Anna	RUS	0	141		Ikonomopoulou, Maria	GRE	0	
80	163		Ovod, Irina	RUS	0	145	WFM	Abuladze, Lana	RUS	0	
81	146	WFM	Bakalarz, Grazyna	LUX	0	164		Chetina, Elizaveta	RUS	0	
82	165		Elizarova, Taisia	RUS	0	148		Goryachkina, Aleksandra	RUS	0	
83	150		Kluchik, Julia	RUS	0	166		Karasova, Daria	RUS	0	
84	168		Toporkova, Sofia	RUS	0	153		De Seroux, Camille	SUI	0	